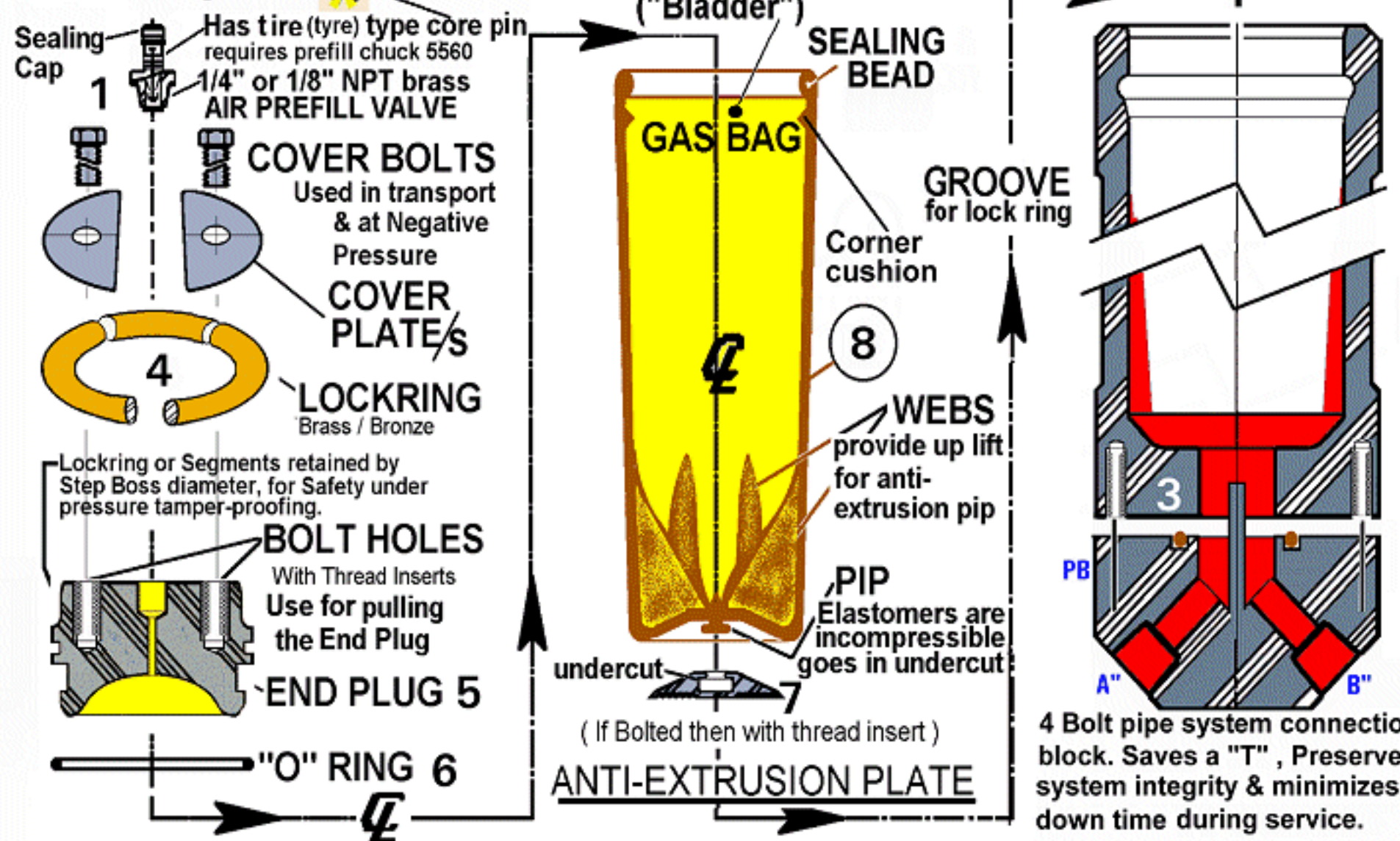


# SERVICE, DISASSEMBLY AND RE-ASSEMBLY *PulseGuard*<sup>®</sup>

**PIPEGUARD** Damper Type / Volume / Design Pressure / Membrane Type, Diameter x Length - Material / Piping Base or Direct Connect / Wetted Material  
 Under Licence From Martin Packler since 1983  
 Pt. Nbr. - Identification : **PiG-Plas** / ... i = in3 / ... p = psi / B = Gas BAG mm Ø mm OAL N, E, H, V, / + PB A" B" etc. - "# or -" npt / Poly-Prop, PVC, etc.  
 / - Lt = Liters / ... Br = Bar / Ex EG: B 300 x 700 · V / + PB 4"x3" or 8" 300# or 4" Mnpt / 316/316L

## PiG-Plas/



**Plastic**

**Separator Membrane**

**Process Liquid**

**Oxygen Free Dry Nitrogen "O.F.N."**

**Helical Thread Insert In Plastic parts.**

**Wrought Metal**

- 1, Nitrogen Pre-Filling Valve
  - 2, Body Shell
  - 3, Body End
  - 4, Segmental Lock Ring
  - 5, Gas End Plug
  - 6, Diametral "O" Seal
  - 7, Anti Extrusion Plate
  - 8, Webbed Gas Bag ("Bladder")
- The following Gas Bag materials are normal inventory, or short lead time.  
 N=Butadiene Acrylo Nitrile  
 E= Ethylene Propylene Ter-Polymer  
 V= Fluora Carbon Elastomer.  
 Low & High temperature, +Food/Drug vers. available.
- 9, Corner Filling Ring ( If Req'd.)
- TO ORDER SPARES**  
 SK=Spares Kit Including Seals and Pre-Fill valve  
 Example : - SK- B24x80- E

**PulseGuard**<sup>®</sup> wishes to review its products; we will install a spares kit, test, & recertify your damper, for the same cost as a spares kit. If \$40.00 has been saved on the original purchase price, by using a "pin core valve," you may wish to have the factory convert your damper to the "Strut Valve" shown bottom right. Please Call for a Returns Materials Authorization Number, -An "RMA", aka "RGA".

**PIN CORES** ARE JUST CHECK VALVES & PROVIDE NO CONTROL **\$750**

**"PRE-FILLING" ASSEMBLY** **\$250**

**AND You can not stop what's in the hose going into the damper.**

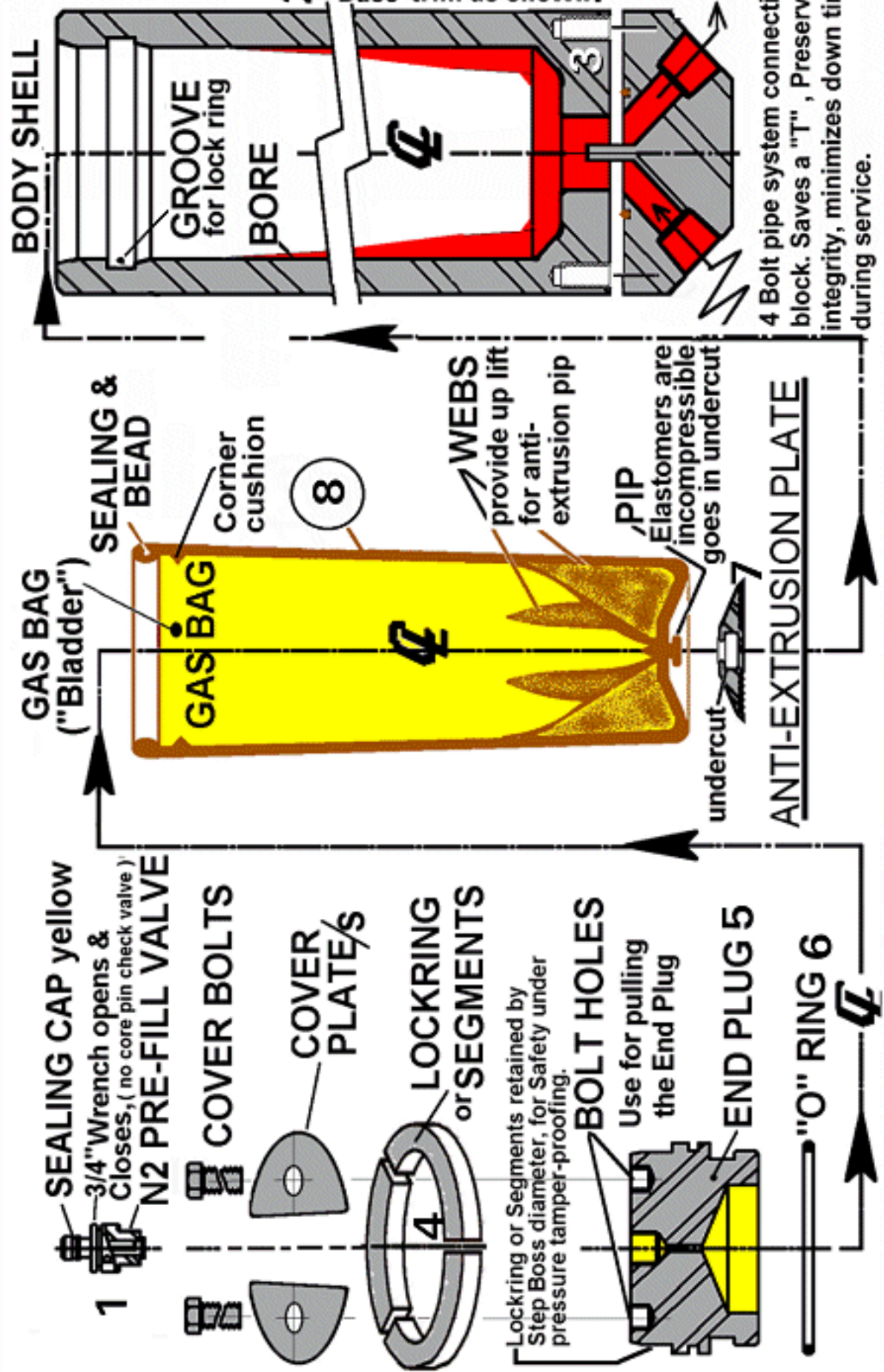
**CYLINDER REGULATOR** **\$500**

HELP LINES  
**PulseGuard**<sup>®</sup>  
 US Toll Free 1-888-Dampers 326-7377  
 Fax Free 1-888-825-5357  
 International -01-910-270-2737

**Guard** against **Pulsation**

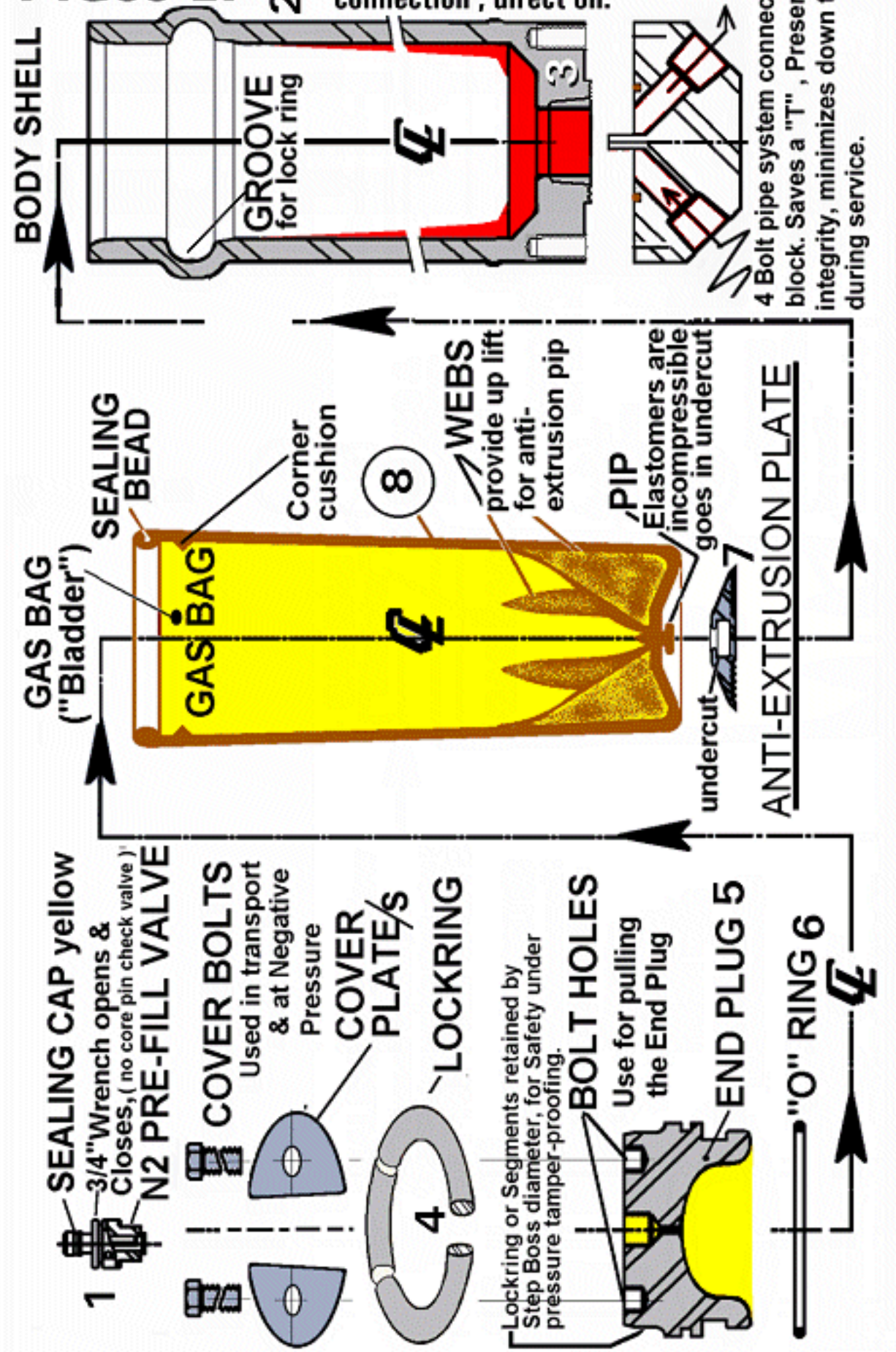
## PiGss-HP

Standard HP PiGs in Piping Base trim as shown.



## PiGss-LP

Standard LP PiGs are single connection, direct on.



But the standard PulseGuard strut valve way, saves a bundle, and is safer. Strut valve, closed & opened with a wrench, you have. **REQUIRES** **40 YEARS AIRCRAFT PROVEN.** **Save 600**

**STRUT valve** **OPEN** **CLOSED**

**\$150**